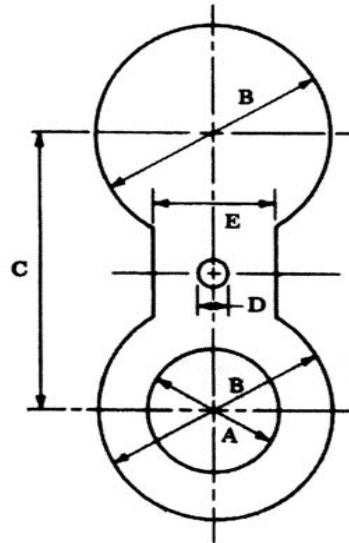


# SPECTACLE BLINDS - SINGLE BLINDS - RING SPACERS

**Notes:**

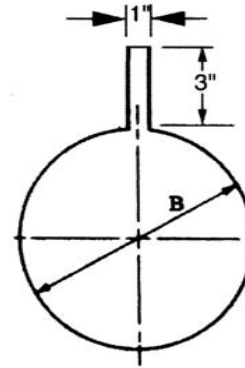
1. For use with Flat or Raised Face Flanges.
2. Specify Surface in Microinch ASA 500, 250, 125, 63 or 32. If not specified, Mill Finish Supplied.
3. Available with Phonographic Serrated Surface or Ground Finish. Available with Ring Type Joint.

All Dims Per ASME B16.48



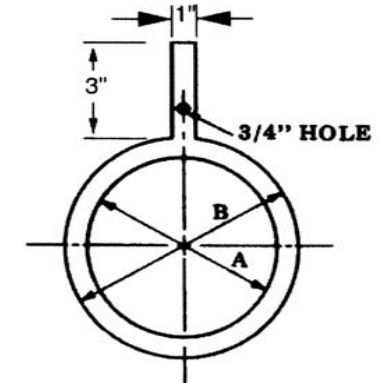
**SPECTACLE FLANGE**

STYLE "J" - CARBON STEEL  
STYLE "JS" - STAINLESS STEEL



**SINGLE BLIND**

STYLE "K" - CARBON STEEL  
STYLE "KS" - STAINLESS STEEL



**RING SPACER**

STYLE "L" - CARBON STEEL  
STYLE "LS" - STAINLESS STEEL

PIPE SIZE	150# FLANGES						300# FLANGES						600# FLANGES					
	A	B	C	D	E	THK	A	B	C	D	E	THK	A	B	C	D	E	THK
1/2"	5/8	1 3/4	2 3/8	5/8	1 1/2	1/4	5/8	2	2 5/8	5/8	1 1/2	1/4	5/8	2	2 5/8	5/8	1 1/2	1/4
3/4"	13/16	2 1/8	2 3/4	5/8	1 1/2	1/4	13/16	2 1/2	3 1/4	3/4	1 1/2	1/4	13/16	2 1/2	3 1/4	3/4	1 1/2	1/4
1"	1 1/8	2 1/2	3 1/8	9/16	1 1/2	1/4	1 1/8	2 3/4	3 1/2	11/16	1 1/2	1/4	1 1/8	2 3/4	3 1/2	3/4	2 1/4	1/4
1 1/4"	1 5/8	2 7/8	3 1/2	9/16	1 1/2	1/4	1 5/8	3 1/8	3 7/8	11/16	1 1/2	1/4	1 7/16	3 1/8	3 7/8	3/4	2 1/4	3/8
1 1/2"	1 7/8	3 1/4	3 7/8	9/16	1 1/2	1/4	1 7/8	3 5/8	4 1/2	7/8	2	1/4	1 11/16	3 5/8	4 1/2	7/8	2 5/8	3/8
2"	2 3/8	4	4 3/4	11/16	2	1/4	2 3/8	4 1/4	5	3/4	2	3/8	2 1/8	4 1/4	5	3/4	2 1/4	3/8
2 1/2"	2 7/8	4 3/4	5 1/2	11/16	2	1/4	2 7/8	5	5 7/8	7/8	2 1/2	3/8	2 5/8	5	5 7/8	7/8	2 5/8	1/2
3"	3 1/2	5 1/4	6	11/16	2 1/2	1/4	3 1/2	5 3/4	6 5/8	7/8	2 1/2	3/8	3 1/4	5 3/4	6 5/8	7/8	2 5/8	1/2
4"	4 1/2	6 3/4	7 1/2	3/4	2 1/2	3/8	4 1/2	7	7 7/8	7/8	2 1/2	1/2	4 1/4	7 1/2	8 1/2	1	3	5/8
5"	5 9/16	7 5/8	8 1/2	7/8	3	3/8	5 5/8	8 3/8	9 1/4	7/8	3	5/8	5 1/4	9 3/8	10 1/2	1 1/8	3 3/8	3/4
6"	6 5/8	8 5/8	9 1/2	7/8	3	1/2	6 5/8	9 3/4	10 5/8	7/8	3	5/8	6 3/8	10 3/8	11 1/2	1 1/8	3 3/8	7/8
8"	8 5/8	10 7/8	11 3/4	7/8	3	1/2	8 5/8	12	13	1	3 1/2	7/8	8 3/8	12 1/2	13 3/4	1 1/4	3 3/4	1 1/8
10"	10 3/4	13 1/4	14 1/4	1	4	5/8	10 3/4	14 1/8	15 1/4	1 1/8	4	1	10 7/16	15 5/8	17	1 3/8	4 1/8	1 3/8
12"	12 3/4	16	17	1	4	3/4	12 3/4	16 1/2	17 3/4	1 1/4	4	1 1/8	12 3/8	17 7/8	19 1/4	1 3/8	4 1/8	1 5/8
14"	14	17 5/8	18 3/4	1 1/8	4 1/4	3/4	14	19	20 1/4	1 1/4	4 3/4	1 1/4	13 5/8	19 1/4	20 3/4	1 1/2	4 1/2	1 3/4
16"	16	20 1/8	21 1/4	1 1/8	4 1/4	7/8	16	21 1/8	22 1/2	1 3/8	4 7/8	1 1/2	15 5/8	22 1/8	23 3/4	1 5/8	4 7/8	2
18"	18	21 1/2	22 3/4	1 1/4	4 1/2	1	18	23 3/8	24 3/4	1 3/8	4 1/2	1 5/8	17 5/8	24	25 3/4	1 3/4	5 1/4	2 1/8
20"	20	23 3/4	25	1 1/4	4 3/4	1 1/8	20	25 5/8	27	1 3/8	4 3/4	1 3/4	19 5/16	26 3/4	28 1/2	1 3/4	5 1/4	2 1/2
24"	24	28 1/8	29 1/2	1 3/8	5 1/2	1 1/4	24	30 3/8	32	1 5/8	5 1/2	2	23 1/2	31	33	2	6	2 7/8

ALL DIMENSIONS IN INCHES - LARGER SIZES AVAILABLE



Purple Engineering

Australian Distributor:

Phone: +61-1300 62 40 20  
 Fax: +61-8-6323 0605  
 Email: Sales@Purple-Eng.com.au  
 Skype: Purple.Engineering

REVISED 03-09